The background of the cover is orange and features various line-drawing illustrations of woodworking projects and tools. At the top left is a small table with a checkered board on it. To its right is a bowl on a stand. Below the table is a guitar on a stand. In the center is a sailboat. At the bottom left are two crossed rulers. At the bottom right is a tall glass. Other items include a mallet, a pencil, and a small box.

# CASCO PROJECT BOOK

**28**  
*Prize Winning*  
**WOOD  
WORKING  
PROJECTS**

**BUILD THEM  
IN YOUR OWN WORK SHOP**

# CASCO PROJECT BOOK

*describing*

28 prize winning articles  
made from wood and veneer  
by homecraftsmen using  
• • CASCO Glue • •

Copyright 1935  
(Second Printing)

THE CASEIN MANUFACTURING COMPANY  
OF AMERICA, INC.  
350 MADISON AVENUE NEW YORK, N. Y.

See Special  
Combination Offer  
inserted at back  
of Book

For the convenience of  
other schools, etc., re-  
duced prices will apply  
to sets of price and in-  
structions when purchased  
in the following quantities:

5 to 9 sets or assorted  
projects . . . 10% off  
regular price

10 to 24 sets or assorted  
projects . . . 15% off  
regular price

25 to 49 sets or assorted  
projects . . . 25% off  
regular price

50 or more sets or assorted  
projects . . . 40% off  
regular price

# PRACTICAL . . . ORIGINAL

THE 28 projects here presented are the result of a country-wide contest for substantial cash prizes offered by the manufacturers of CASCO Glue. These prize winning selections (supplemented by a few articles of special interest) were made from hundreds of entries by judges well known in the Homecraft field. Each article has actually been made and put into use.

The projects are here illustrated and briefly described. Some can be made with the simplest of hand tools. Others call for the skill of the experienced Homecrafter who has a well-equipped workshop. CASCO Glue is essential to the building of each article; in fact, the object of this book is to interest the Homecrafter in making durable articles of beauty and value out of inexpensive wood and veneer, with the help of CASCO Glue.

The directions for making each article have been edited and the plans have been prepared under the direction of Mr. Herman Hjorth, the well-known manual training and homecraft authority, thus insuring easy understanding of the details of construction of each article.

## How to Order

Order the directions and plans for as many projects as desired. Be sure and give the identification number. Remittance (preferably by check or money order—if cash is sent, please register) must accompany the order. Directions and plans cannot be returned for refund. Address—

PROJECT DEPARTMENT

THE CASEIN MANUFACTURING COMPANY  
OF AMERICA, INC.

350 MADISON AVENUE

NEW YORK, N. Y.



## INLAID CARD TABLE

*First Prize in  
Casco Project Contest*

*By  
GEORGE B. PAUL*

A card table is practically an indispensable piece of furniture in the modern household. And who wouldn't like to have a card table that has a built-in checkerboard and four ash trays, besides compartments for cards, pencils, score pads and chessmen? In addition to all these conveniences, which cannot be found in any other card table, the legs fold under the top as in the ordinary commercial article.

Moreover, the table, with its veneered and inlaid top, is a beautiful and well-designed piece of furniture, the construction of which will afford the home craftsman many hours of pleasure and satisfaction.

*Project No. 1*

*One plan and complete directions 30c. postpaid.*

TO ORDER PLANS AND DIRECTIONS SEE PAGE 2

## MODEL SAILBOAT

*Second Prize in  
Casco Project Contest*

*By*

LEON H. BAXTER



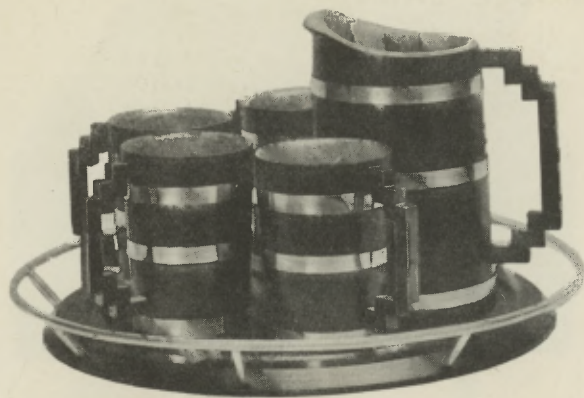
This smart looking sailboat was designed by a man who thoroughly understands boats and how to sail them. This model, which is 27" long, has proved the fastest and most successful of the many he has made, and it has won every regatta in which it has been entered.

The hull is made of five boards or "lifts" glued together with CASCO Glue. When dry, they are shaped both outside and inside with spokeshave, gouge, file and sandpaper. Detailed drawings and directions are given for doing all this work easily and correctly. Even pointers on how to sail the boat are given.

*Project No. 2*

*Three plans and complete directions 55c. postpaid.*

TO ORDER PLANS AND DIRECTIONS SEE PAGE 2



## MODERN BEER SET

*Third Prize in Casco Project Contest*

*By WAYNE C. LECKEY*

This stunning, ultra-modern beer set will harmonize with the fittings of the modern home and serve as a smart dispenser of refreshing drinks.

The construction may at first glance seem to be a little intricate and out of the ordinary, but drawing and directions are so clear and complete that any craftsman of average ability will have no difficulty in following them and turning out a creditable piece of work.

The pitcher as well as the mugs are glued up of several narrow pieces of wood. They are then turned, lacquered and finished with metal bands.

*Project No. 3*

*One plan and complete directions 30c. postpaid.*

TO ORDER PLANS AND DIRECTIONS SEE PAGE 2



### DRAFTING TABLE

By A. P. BRINKERHOFF

Artists, architects, engineers, designers and others who use a drafting table often have one made of fine cabinet woods and finished as a piece of furniture, so that it can be placed in their homes without clashing violently with the rest of the furnishings.

It is this type of attractive drafting table which is shown in the above photograph. The top is made of alternate strips of white pine and redwood glued together and this is enclosed in a frame of cherry wood. The legs and their bases are covered on both sides with bird's-eye maple and mahogany veneers.

*Project No. 4*

*One plan and complete directions 30c. postpaid.*

TO ORDER PLANS AND DIRECTIONS SEE PAGE 2



### INTARSIA BOX

By W. A. HAUGHEY

Intarsia is a form of inlay in which designs sawed from thin pieces of wood are glued into corresponding recesses, chiseled out of a piece of solid wood. By using veneers of different color and texture a complete picture may be formed.

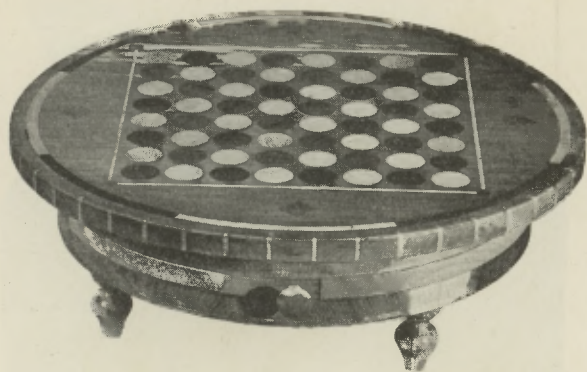
This work is very fascinating and may be done by anyone who has a little patience. Kits containing pictures and all necessary materials are sold at a low price.

Intarsia may be used as a decoration for boxes, trays or other pieces of furniture. An intarsia panel also may be hung on the wall as an ordinary picture.

*Project No. 5*

*One plan and complete directions 30c. postpaid.*

TO ORDER PLANS AND DIRECTIONS SEE PAGE 2



## INLAID CHECKERBOARD

By L. J. BURGE

The ancient and aristocratic game of chess and the more modern and democratic game of checkers are both played on a board divided into 64 squares of alternating light and dark colors.

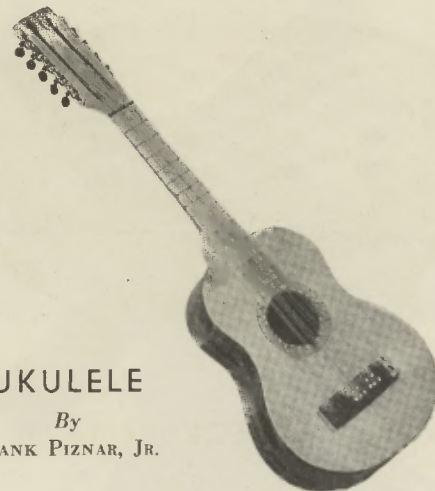
This checkerboard is a little out of the ordinary, because the designer uses circles instead of squares. Circles are really more logical than squares because the base of chessmen is circular. It also makes the construction much easier. The circular disks are simply sawed off from turned cylinders and glued into holes bored with an auger bit.

The checkerboard stands on three turned legs and has two compartments for the chessmen.

*Project No. 6*

*One plan and complete directions 30c. postpaid.*

TO ORDER PLANS AND DIRECTIONS SEE PAGE 2



## UKULELE

By  
FRANK PIZNAR, JR.

The making of stringed instruments is a very ancient art in which the Italians in particular excelled. These old instruments bring fabulous prices today on account of their unexcelled tone qualities.

For the novice a ukulele is a good instrument to begin with, because it is much easier to make than a violin or cello. Amateurs have produced very good stringed instruments, both as to tone, quality and workmanship.

Learn how this instrument is made; how the sides are bent to shape over a heated pipe, how the body is strengthened and reinforced, how the neck is shaped and dovetailed, etc.

*Project No. 7*

*One plan and complete directions 30c. postpaid.*

TO ORDER PLANS AND DIRECTIONS SEE PAGE 2



### DUTCH WINDMILL *By* EDWARD MURRAY

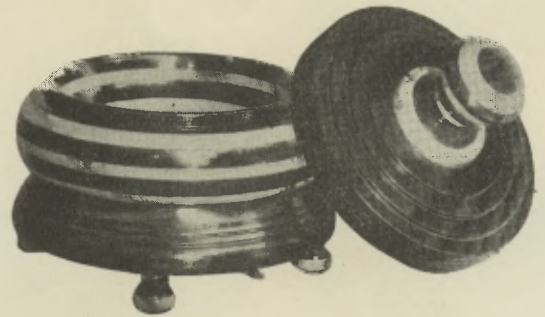
As is clearly shown in the excellent photo above, this model of an old Dutch windmill is made entirely from matches held together with glue. A model of this kind is a really worth-while piece of work, because it is so attractive and unusual and looks so true to nature.

Its construction should of course be undertaken only by persons endowed with a generous amount of patience, because work like this cannot be done in a hurry. The author explains clearly and in detail how the windmill is constructed and built up step by step, or, rather, match by match.

*Project No. 8*

*One plan and complete directions 30c. postpaid.*

TO ORDER PLANS AND DIRECTIONS SEE PAGE 2



### MUSICAL POWDER BOX

*By*

HARRY McCOMMAS

This beautiful powder box is designed in the modernistic manner and will surely be a welcome addition to any lady's dressing table. It has an added charm in the built-in music box, which is so ingeniously arranged that it starts to play when the lid of the box is removed and stops when it is again replaced.

The material from which the box is turned is built up of layers of wood of contrasting colors. This gives the box its distinction and individuality of design. The interesting thing is that the possibilities for varying this type of design are practically unlimited.

*Project No. 9*

*One plan and complete directions 30c. postpaid.*

TO ORDER PLANS AND DIRECTIONS SEE PAGE 2



## WOOD JEWELRY

By  
J. A. HILL

Novelty jewelry such as bracelets, rings, belt buckles, cuff buttons, and fancy buttons for ladies' coats and dresses is extraordinarily good looking and immediately takes the fancy and interest of the fair sex.

It is made by building up and gluing together layers of wood of different thicknesses and contrasting colors. By gluing these layers at right angles to each other the finished ring or bracelet becomes many times stronger than a ring made from a solid piece of wood.

The author has developed an easy and foolproof method of finishing these articles which must have a durable and high lustre.

*Project No. 10*

*One plan and complete directions 30c. postpaid.*

TO ORDER PLANS AND DIRECTIONS SEE PAGE 2



## TURND SEWING SET and JEWEL CASE

By JAMES C. BROWN

These turned objects are made from blocks built up of pieces of wood of contrasting colors such as black walnut and bird's-eye maple. This type of work is more interesting than turnings made from solid wood because of the patterns that develop and change with each cut of the chisel. Moreover, the variety of designs possible are limited only by one's own ingenuity.

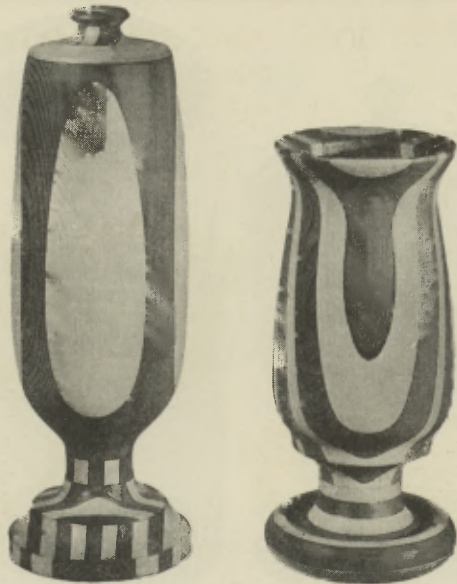
The sewing set has a compartment in the bottom for buttons, needles, thread, etc. It has a pin-cushion on top surrounded by metal rods for spools. The jewel case consists of only two parts, bottom and lid.

*Project No. 11*

*One plan and complete directions 30c. postpaid.*

TO ORDER PLANS AND DIRECTIONS SEE PAGE 2





### TURNED VASES

By  
H. N. STENEN

The possibilities and opportunities for creating original and striking designs in turned objects by the process of combining and gluing contrasting layers of wood are practically unlimited. The two beautiful vases shown in the photograph above are typical examples of this kind of work. The drawings show the method of building up the different parts so clearly and in such detail, that the one who undertakes this work can not only make the vases, but also apply the method to other turned objects.

Another advantage is that stock of any dimension may be built up easily and cheaply by using short lengths and scraps.

*Project No. 12*

*Two plans and complete directions 45c. postpaid.*

TO ORDER PLANS AND DIRECTIONS SEE PAGE 2

### FRUIT BOWL AND CANDY DISH

By  
CHARLES M. WILSON



These two interesting and beautiful examples of the wood-turner's art will certainly command the attention of any craftsman.

The fruit bowl is the easiest one to make, consisting simply of rings and disks of differently colored woods glued together. By varying the thickness, spacing and kinds of wood, any number of different designs may be produced.

The candy dish is more difficult to construct, but also more unusual and unique. It consists of a solid disk for the base on which is built up four layers of tapered blocks. The top is finished off with a ring of solid wood.

*Project No. 13*

*One plan and complete directions 30c. postpaid.*

TO ORDER PLANS AND DIRECTIONS SEE PAGE 2