



Things to Make on Your

**CIRCULAR SAW
and JOINTER**

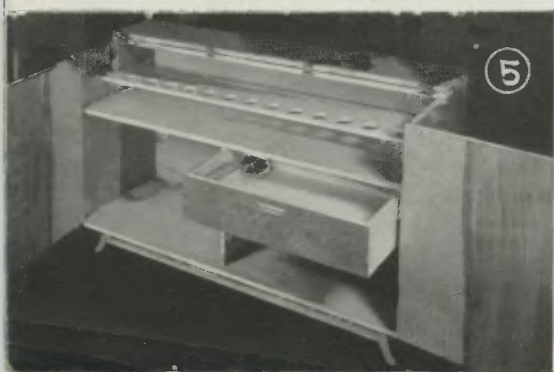
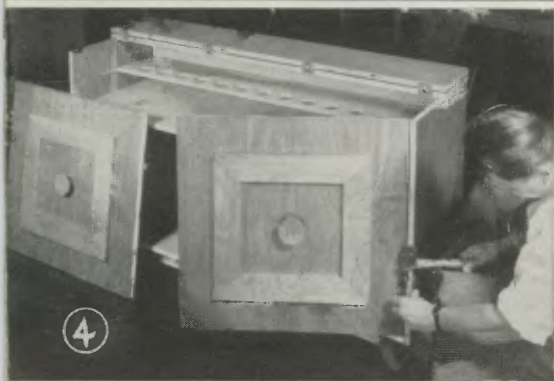
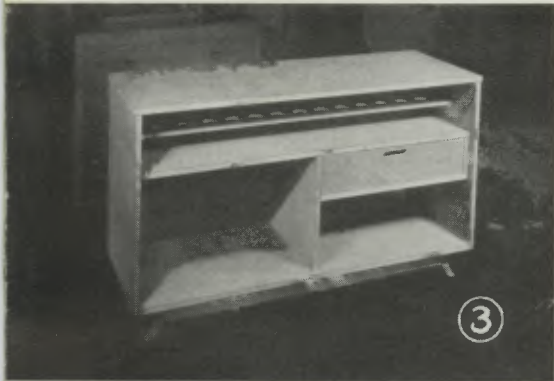


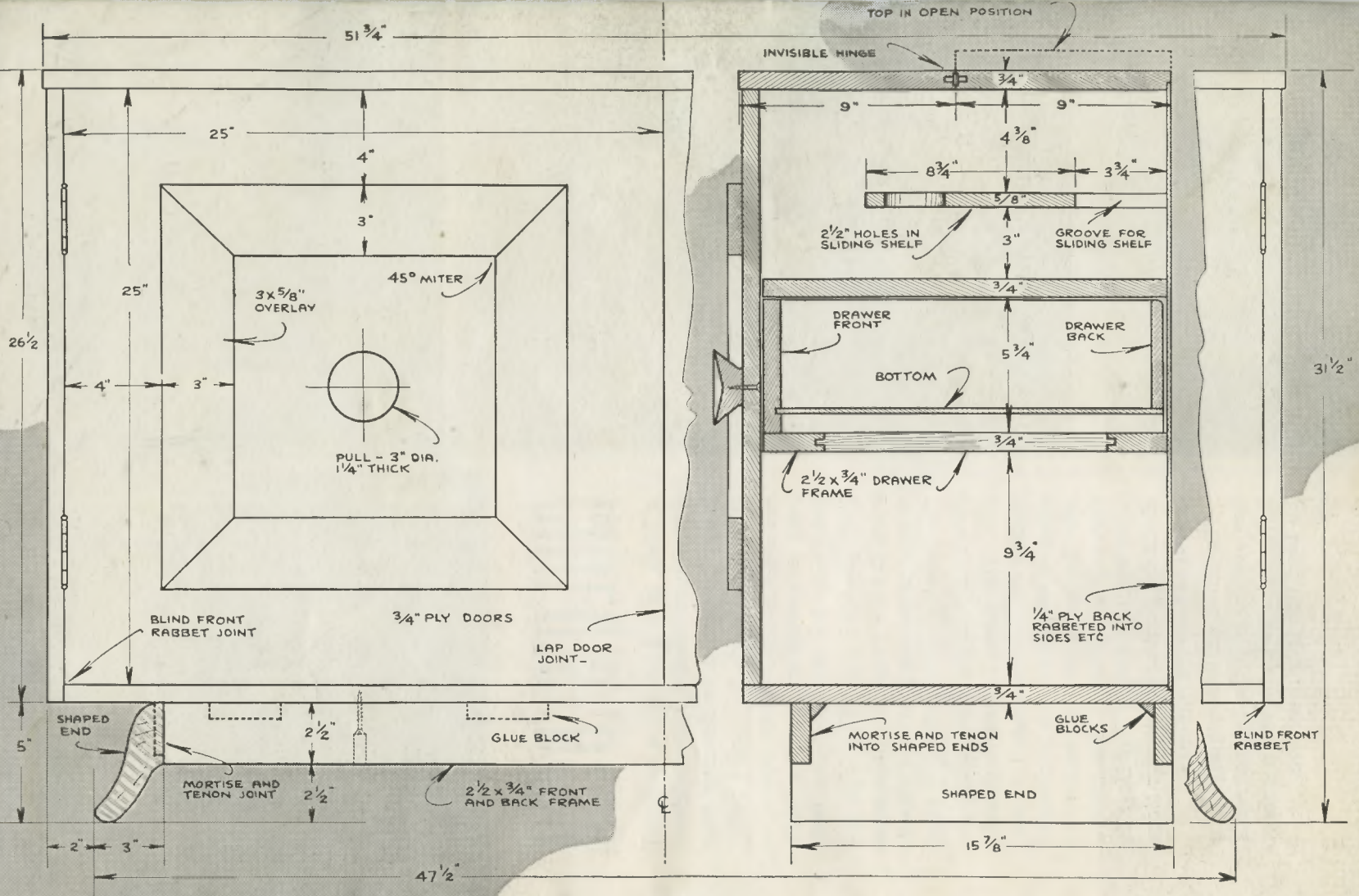
MODERN CELLARET

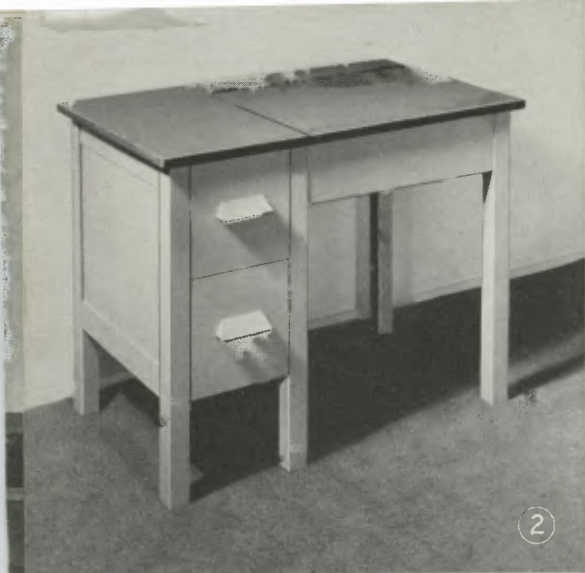
☆ THIS attractive cellaret was made entirely from hard wood such as birch, and the drawing shown on the following page is self-explanatory.

The shaped ends which form the feet are roughed out on the circular saw and finished by hand. The door pulls are turned on the lathe as shown in photograph No. 6. The sliding tray with the holes for glasses is made from $\frac{5}{8}$ " stock and slides forward in a groove cut in the sides. The top is hinged on four invisible hinges. (See photographs No. 4 and 5.) A spacing block on the right end of the drawer compartment is necessary to clear the hinged door.

The finish is all natural with linseed oil, shellac and varnish.



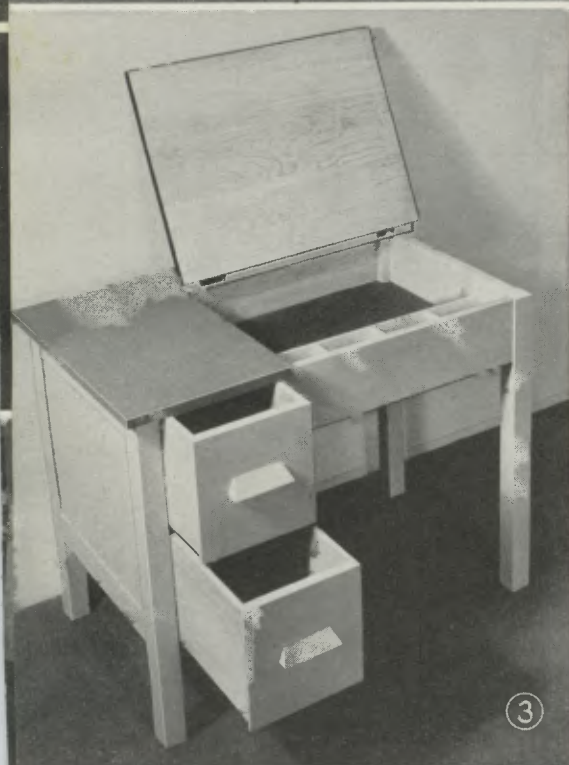




2



1



3

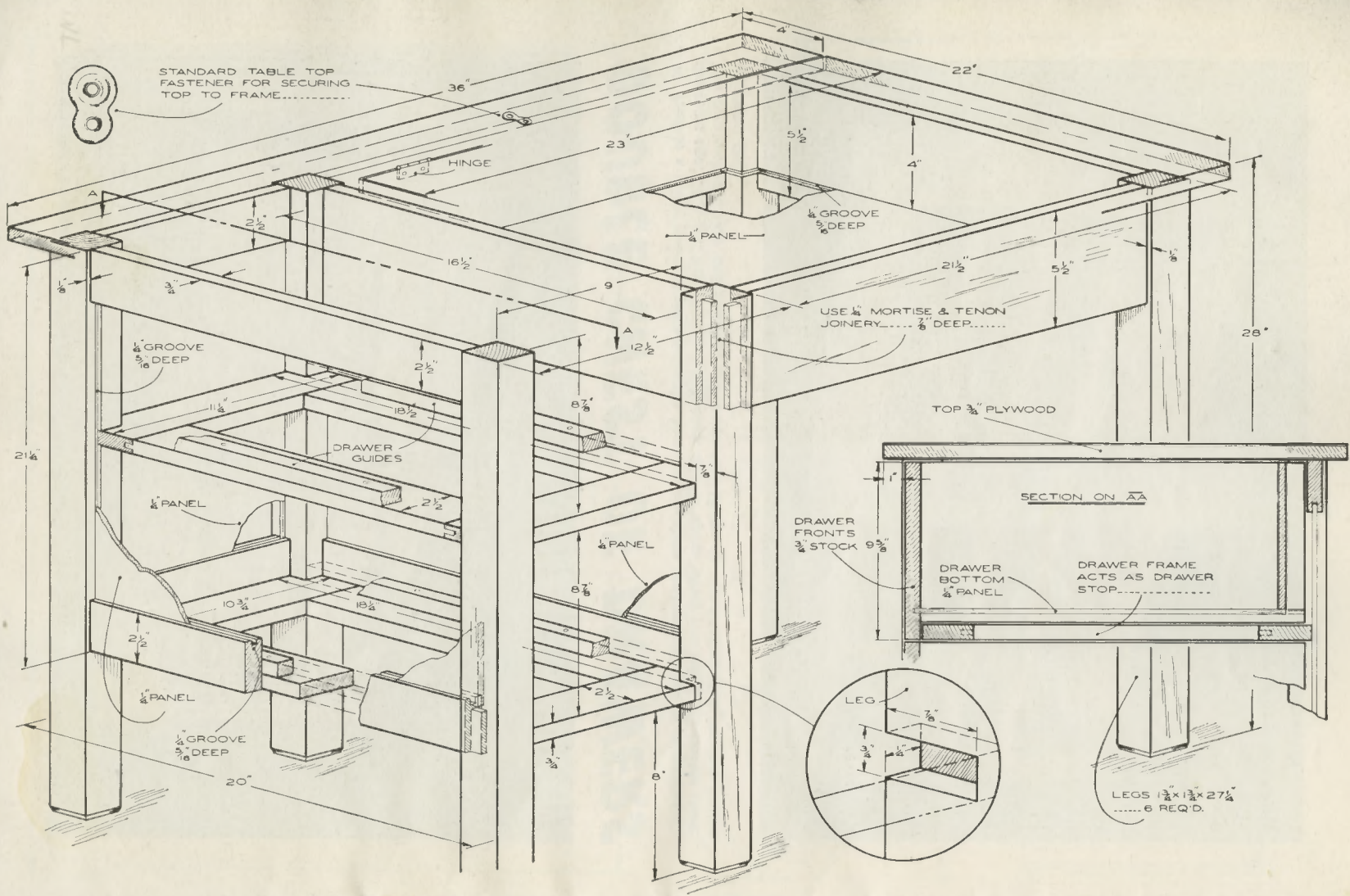


4

CHILD'S DESK

☆ Here is a plan for a practical dual-purpose desk for the children. It may be used as an ordinary desk or a work bench for model building with ample storage space as seen in photograph 3. The stock used may be ordinary pine with $\frac{3}{4}$ " plywood top. The legs are $1\frac{3}{4}$ " x $1\frac{3}{4}$ " square, while most of the other stock is $\frac{3}{4}$ " thick. The drawing on the following page shows most of the construction details. The panel bottom under the folding lid may be either $\frac{1}{4}$ " plywood or Presdwood. It is grooved into the sides of this section as shown in the drawing. The drawer construction shows a lap front in which the front of the drawer stops against the drawer frame.

The finish on this original piece was enamel with the top painted a darker color so that it will not show the hard use it will receive.



STANDARD TABLE TOP FASTENER FOR SECURING TOP TO FRAME.....

36"

22"

23"

5 1/2"

28"

16 1/2"

2 1/2"

21 1/4"

DRAWER GUIDES

TOP 3/4" PLYWOOD

SECTION ON AA

DRAWER FRONTS 3/4" STOCK

DRAWER BOTTOM 1/4" PANEL

DRAWER FRAME ACTS AS DRAWER STOP.....

LEG

LEGs 1 1/2 x 1 1/2 x 27 1/2 6 REQ'D.

1/4" GROOVE 3/8" DEEP

1/4" GROOVE 5/8" DEEP

1/4" PANEL

1/4" PANEL

1/4" PANEL

1/4" GROOVE 3/8" DEEP

9"

12 1/2"

USE 1/4" MORTISE & TENON JOINERY..... 1/2" DEEP.....

2 1/2"

8 7/8"

8 7/8"

2 1/2"

8"

11 1/4"

18 1/2"

2 1/2"

10 3/4"

18 1/2"

20"

4"

4"

A

A

3/8"

1/8"

7/8"

2 1/2"

3/8"

1"

9 5/8"

7/8"

3/8"

2 1/2"

3/8"

3/8"

3/8"

3/8"

3/8"

3/8"

3/8"

3/8"

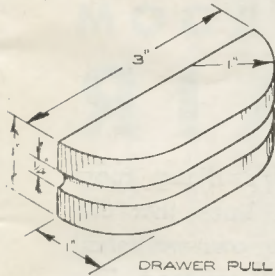
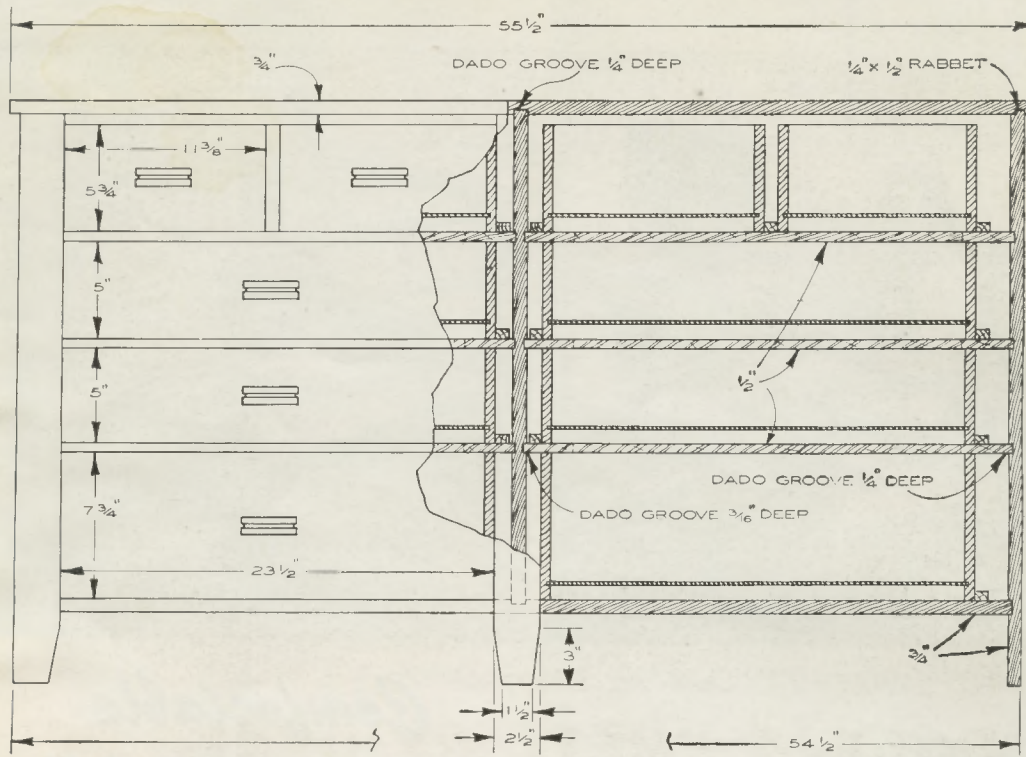
3/8"



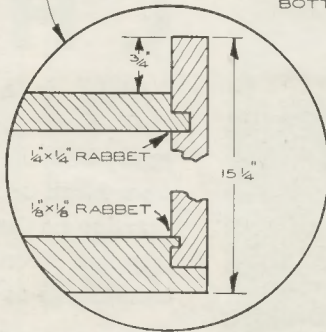
DOUBLE CHEST OF DRAWERS

☆ Here is a really practical project for the home where there are two children of approximately the same age. Each will have his own individual drawer space when you build this double chest. The construction details and complete dimensions are shown in the detailed plan drawing on the following page.





DETAIL ON
DRAWER JOINERY



DRAWER FRONT - 3/4" MAPLE
SIDES AND BACK - 1/2" PINE
BOTTOM - 1/4" PINE, PLYBOARD OR PRESSEDWOOD

1/4" PLYBOARD OR PRESSEDWOOD

